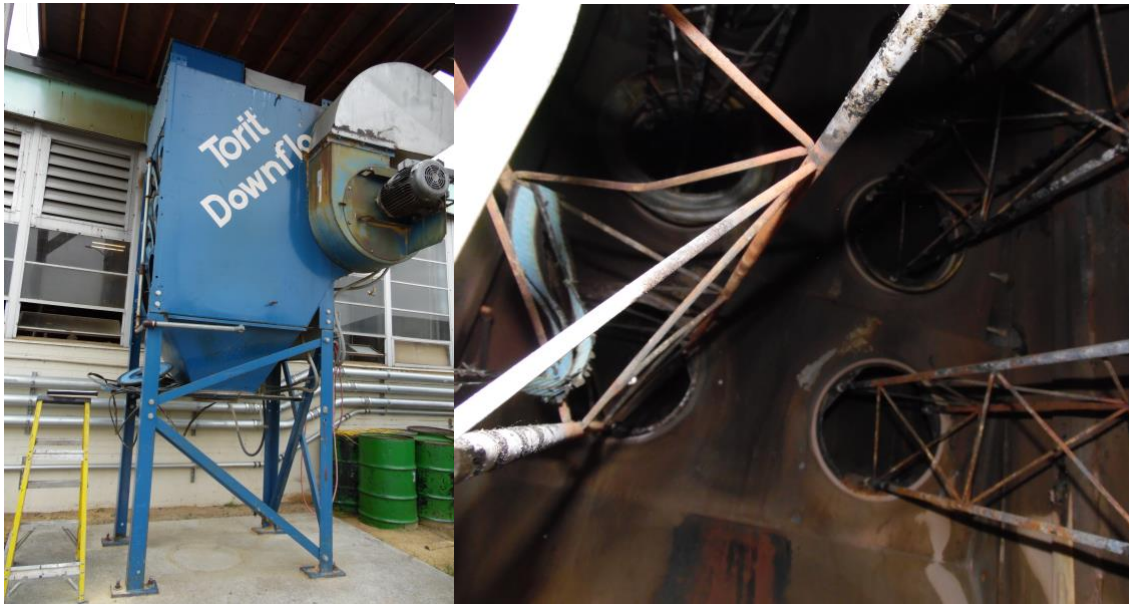


Dust Collector Fire Damage Loss



ILC Assignment:

- Inspect the insured's dust collector that was involved in a fire.
- Determine if the dust collector is restorable to pre-loss condition.
- If restorable, determine the scope of work to be completed, cost, and timeframe.
- Provide RCV and ACV valuation for the damaged equipment.

ILC Analysis:

- ILC thoroughly inspected the dust collector to determine if it was restorable to pre-loss condition.
- ILC reviewed the new replacement quote of \$137,836 provided by the insured.
- Smoke was observed coming from the ductwork that supplied the dust to the dust collector.

Summary:

- ILC determined that it was not feasible to restore the dust collector to pre-loss condition.
- ILC provided an ACV valuation of the equipment.
- ILC obtained an RCV quote that was \$98,205 less than the insured's supplied quote.
- ILC determined that the insured supplied quote was not LKQ and was for a much larger upgraded piece of equipment.
- ILC recommended adding the fire suppression system for a replacement to minimize the possibility of a fire in the future. This system was not on the original damaged equipment.
- ILC suggests cleaning the ductwork.